

## VaproSmart™ ICL

an interior air barrier and smart vapor retarder sheet membrane.

Roll Size: 9'8" Product No.: 55879556

Roll Size: 59" Product No.: 55879000



### Tools and Accessories



Staple Gun



Corrosion-resistant staples



Box Knife



VaproRoller  
Part No. 60855190



VaproShield Sausage Gun  
Part No. 60159800



VaproFlashing™ SA  
or approved single-sided sheathing tape



VaproAirSeal™

### Delivery, Packaging and Storage

Store roll materials in original packaging at temperatures between 40°F and 120°F (4°C - 49°C). Protect materials from direct sunlight and inclement weather until ready for use.

### Compatible Assemblies



Wood Stud Framing



Metal Stud Framing

**Contact VaproShield Technical** – if you have additional assembly or technical questions.

### Substrate Preparation

- Ensure framing is clear of nails, splinters and all unnecessary protrusions that could damage the membrane.
- Check that framing and substrates are structurally sound and capable of supporting the air barrier system

### Safety

- Read the full label and SDS for precautionary instructions before use. Use proper safety equipment and jobsite controls during application and handling.
- Work crews are safe around VaproShield membranes.
- VaproSmart ICL contains zero VOCs or toxins.

### Do's

- DO use VaproShield approved products for this system
- DO determine horizontal or vertical installation
- DO ensure you have the required overlaps both horizontally and vertically
- DO install membrane printed side facing the interior
- DO use only recommended attachment methods
- DO inspect all seams, overlaps, edges and penetrations for complete sealing and adhesion to optimize product performance

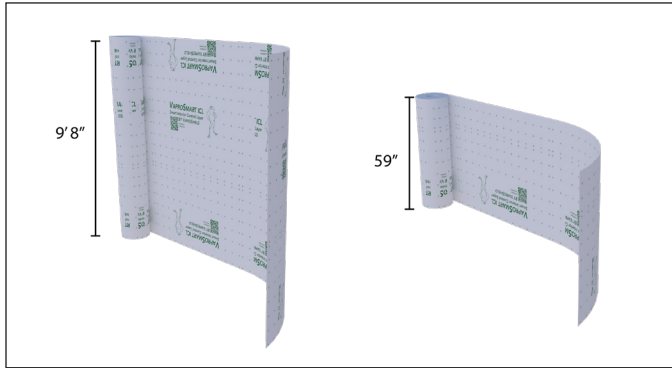
### Don't's

- DON'T install over nails and other protrusions
- DON'T store in direct sunlight or over 120°F (-49°C)
- DON'T use alternative attachment methods, other than outlined in installation instructions.
- DON'T install printed side facing outward

# INSTALLATION INSTRUCTIONS

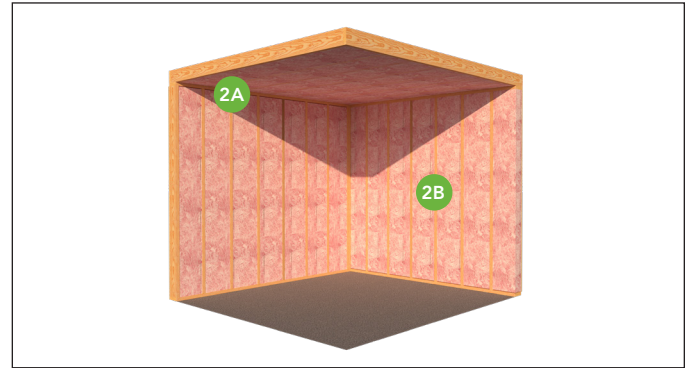
VaproSmart ICL 9'8" Product No.: 55879556, 59" Product No.: 55879000

## Best Practice Installation



### Step 1: Identify Roll Size

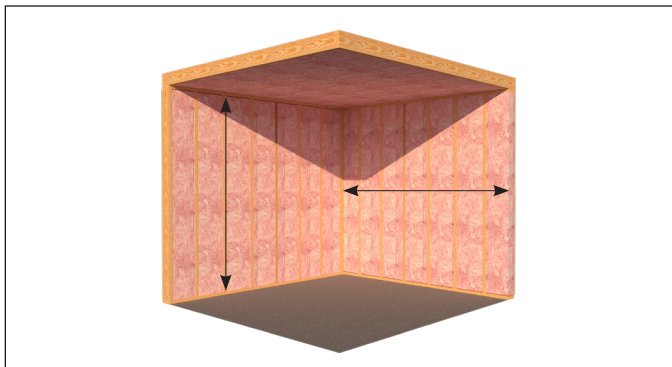
Confirm roll size: 9'8" or 59" (2.95 m or 1.5 m).



### Step 2: Workspace Preparation

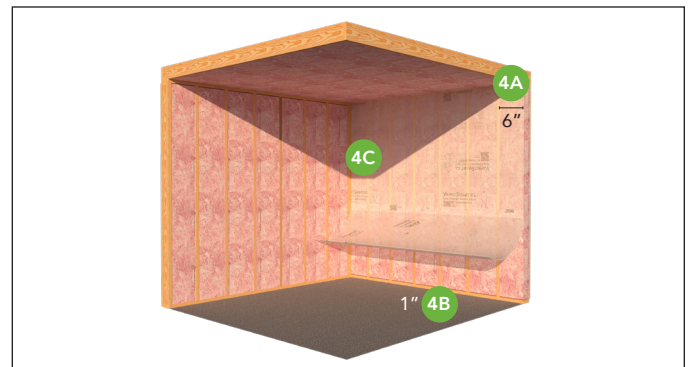
- 2A Ensure the wall/ceiling substrate is smooth and structurally sound.
- 2B Remove nails, splinters, protrusions, dust, grease, and debris.

Verify the workspace is clean and all required installation tools are available.



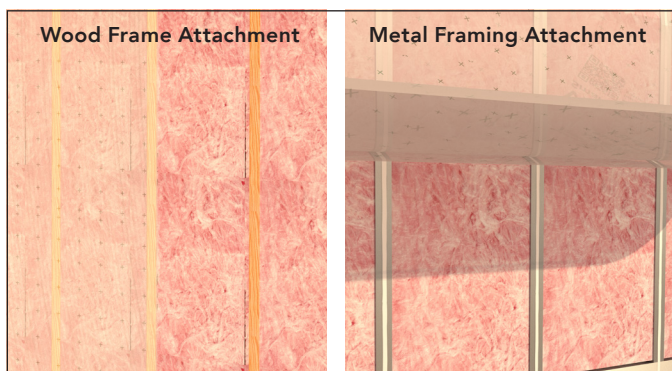
### Step 3: Positioning

Based on framing and wall height determine horizontal or vertical installation.



### Step 4: Measure and Cut Membrane

- 4A Cut the membrane to span the full length of the wall plus min. 6" (15.2 cm) extra on each end for overlaps and sealing.
- 4B Ensure minimum 1" (2.5 cm) excess at floor and ceiling for sealing.
- 4C Install the printed side facing the interior of the building.  
Keep sheets flat and tension-free—do not excessively stretch the membrane.

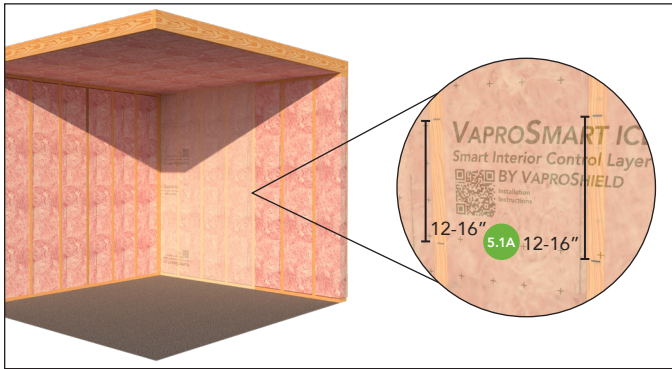


### 5. Attachment

VaproSmart can be attached to either wood studs or metal framing. Review Steps 5.1 and/or 5.2 for best practice installation.

# INSTALLATION INSTRUCTIONS

VaproSmart ICL 9'8" Product No.: 55879556, 59" Product No.: 55879000

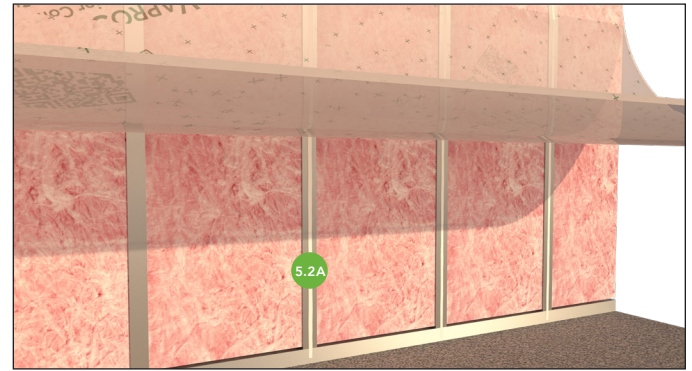


## Step 5.1: Wood Frame Attachment

Using a staple gun and corrosion-resistant staples fasten the starting edge of the membrane to the studs.

- 5.1A** Fastener spacing: 12–16" (31-41 cm) on center, ideally within overlap areas.

Align the membrane with framing and maintain smooth, wrinkle-free placement.



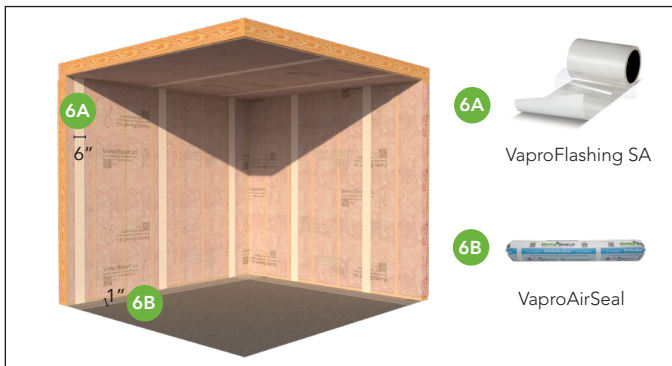
## Step 5.2: Metal Framing Attachment

- 5.2A** Secure VaproSmart to metal framing using one of the following methods:

- VaproAirSeal or specified non-curing acoustic sealant
- Specified Double-sided construction tape
- Specified Spray adhesive

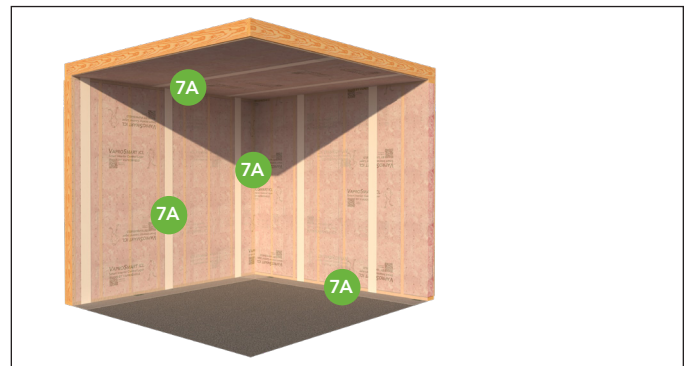
Press the membrane firmly onto the framing to ensure continuous, smooth contact with the frame surface. Hand pressure is acceptable when using approved attachment methods; however, pressure rolling is recommended when practical to promote consistent adhesion.

Align the membrane with framing and maintain smooth, wrinkle-free placement.



## Step 6: Overlaps and Seam Taping

- 6A** Overlap adjoining sheets by a min. of 3" (7.6 cm) on horizontal and/or vertical seams.
- Before taping, ensure the overlap area is clean.
  - Apply VaproFlashing SA or approved sheathing tape centered over the seam, press firmly to ensure adhesion.
  - Avoid wrinkles or "fishmouths" in taped areas.
- 6B** Seal base overlap with VaproAirSeal or specified non-curing acoustic sealant. Press firmly to ensure adhesion.

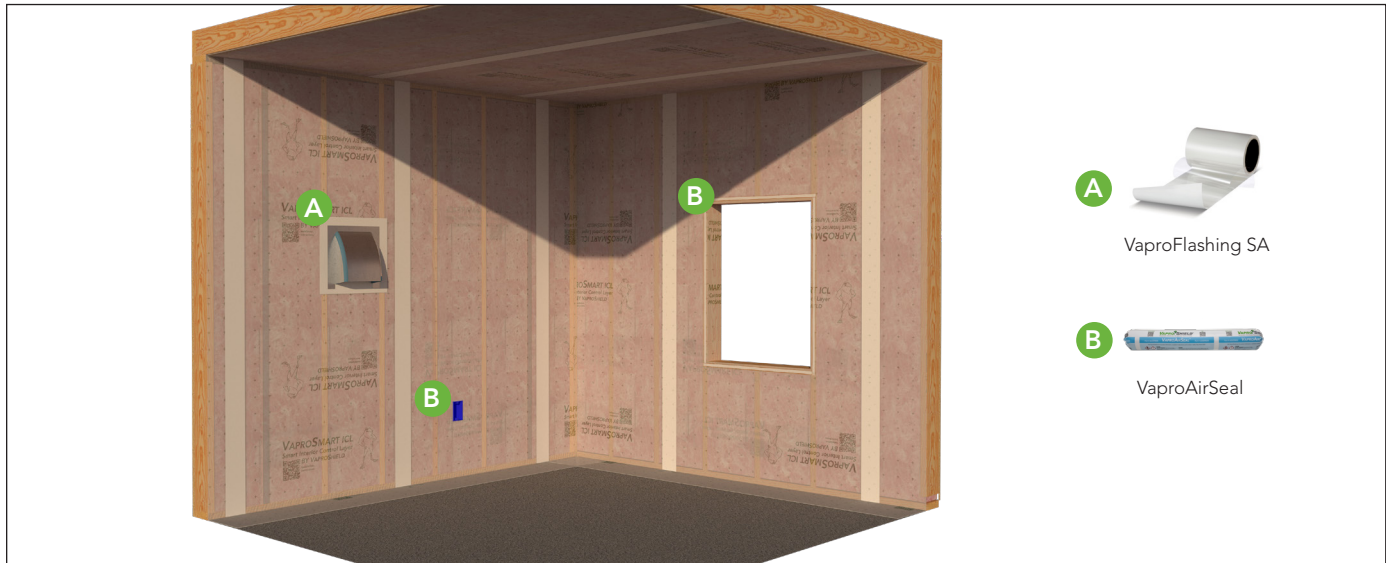


## Step 7: Final Inspection

- 7A** Inspect all seams, overlaps, edges, and penetrations for complete sealing and adhesion.
- Repair any gaps, punctures, or unsealed areas using membrane patches and tape.
- Optional: perform air leakage testing to verify air barrier continuity prior to drywall installation.

# INSTALLATION INSTRUCTIONS

VaproSmart ICL 9'8" Product No.: 55879556, 59" Product No.: 55879000



## Penetrations and Rough Openings

- A** Large penetrations or openings: patch with membrane offcuts, overlap at least 3", (7.6 cm) and seal with VaproFlashing SA or approved sheathing tape.
- B** Small penetrations (electrical boxes, conduit, pipes): cut membrane carefully and seal with VaproAirSeal, non-curing acoustic sealant, or sheathing tape.
- B** Windows, doors, and rough openings: fold membrane into opening, secure with fasteners, and seal perimeter with VaproAirSeal.

## Service Cavity and Insulation Coordination

If installing a service cavity or loose-fill insulation, ensure the membrane is supported and remains flat.

Avoid punctures or tearing when trades access the wall cavity.